

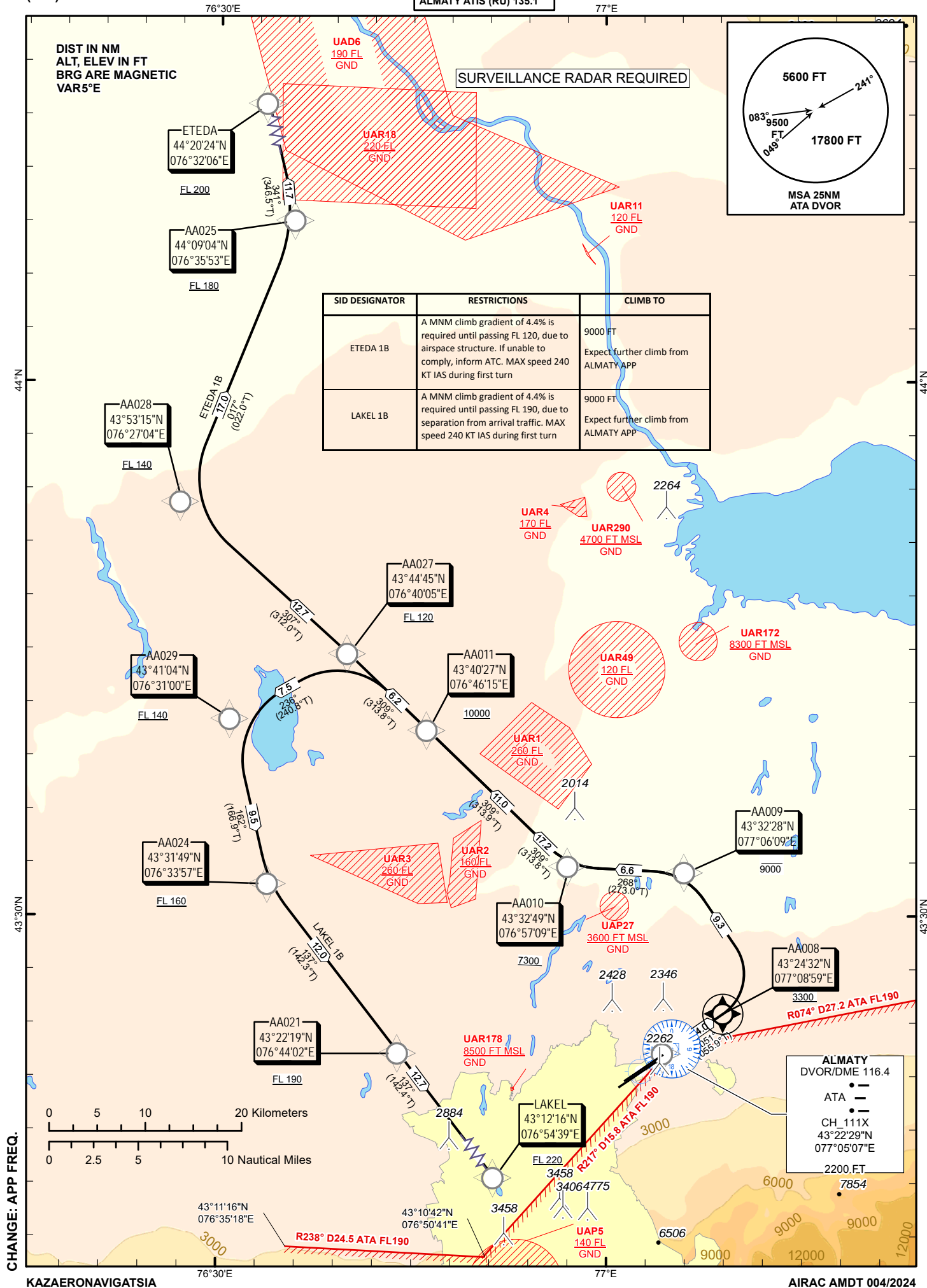
STANDARD DEPARTURE
CHART - INSTRUMENT
(SID) - ICAO

TRANSITION ALT
10000 FT

ALMATY APPROACH 118.3
ALMATY RADAR 126.8
ALMATY TOWER 119.4
ALMATY ATIS (EN) 129.8
ALMATY ATIS (RU) 135.1

(RNAV 1 SID BASED ON GNSS)
ETEDA 1B, LAKE 1B

ALMATY
RWY 05L/05R



TABULAR DESCRIPTION

ETEDA 1B RWY 05L/05R											
Serial Number	Path Descriptor	Waypoint Identifier	Fly - over	Course °M(°T)	Magnetic Variation(°)	Distance NM	Turn Direction	Altitude FT	Speed KT	VPA (°)	Navigation Specification
10	CF	AA008	Y	51(55.9)	5.12	4	-	+3300	-240	2.4	RNAV1
20	DF	AA009	-		5.12	9.3	L	-9000		2.4	RNAV1
30	TF	AA010	-	268(273)	5.12	6.6	L	+7300		2.4	RNAV1
40	TF	AA027	-	309(313.8)	5.12	17.2	R	+FL120		2.4	RNAV1
50	TF	AA028	-	307(312)	5.12	12.7	-	+FL140		2.4	RNAV1
60	TF	AA025	-	17(22)	5.12	17	R	+FL180		2.4	RNAV1
70	TF	ETEDA	-	341(346.5)	5.12	11.7	L	+FL200		2.4	RNAV1

WAYPOINT LIST

ETEDA 1B RWY 05L/05R		
Waypoint Identifier	Coordinates	
DER	432217.76N	0770427.01E
AA008	432432.33N	0770858.98E
AA009	433228.13N	0770608.77E
AA010	433249.06N	0765708.71E
AA027	434444.67N	0764004.73E
AA028	435314.65N	0762704.33E
AA025	440903.58N	0763553.43E
ETEDA	442024.00N	0763206.00E

WAYPOINT LIST

LAKEL 1B RWY 05L /05R		
Waypoint Identifier	Coordinates	
DER	432217.76N	0770427.01E
AA008	432432.33N	0770858.98E
AA009	433228.13N	0770608.77E
AA010	433249.06N	0765708.71E
AA011	434027.08N	0764614.53E
AA027	434444.67N	0764004.73E
AA029	434104.20N	0763059.60E
AA024	433148.94N	0763357.35E
AA021	432219.35N	0764402.43E
LAKEL	431216.00N	0765439.00E

TABULAR DESCRIPTION

LAKEL 1B RWY 05L /05R											
Serial Number	Path Descriptor	Waypoint Identifier	Fly - over	Course °M(°T)	Magnetic Variation(°)	Distance NM	Turn Direction	Altitude FT	Speed KT	VPA (°)	Navigation Specification
10	CF	AA008	Y	51(55.9)	5.12	4	-	+3300	-240	2.5	RNAV1
20	DF	AA009	-		5.12	9.3	L	-9000		2.5	RNAV1
30	TF	AA010	-	268(273)	5.12	6.6	L	+7300		2.5	RNAV1
40	TF	AA011	-	309(313.9)	5.12	11	R	+10000		2.5	RNAV1
50	TF	AA027	-	309(313.8)	5.12	6.2	-	+FL120		2.5	RNAV1
60	TF	AA029	-	236(240.8)	5.12	7.5	L	+FL140		2.5	RNAV1
70	TF	AA024	-	162(166.9)	5.12	9.5	L	+FL160		2.5	RNAV1
80	TF	AA021	-	137(142.3)	5.12	12	L	+FL190		2.5	RNAV1
90	TF	LAKEL	-	137(142.4)	5.12	12.7	L	+FL220		2.5	RNAV1